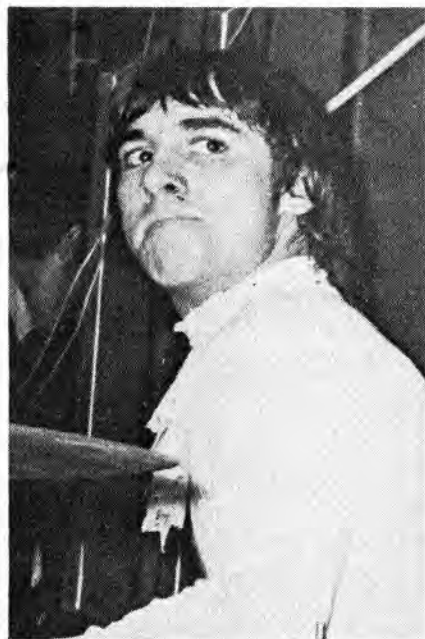
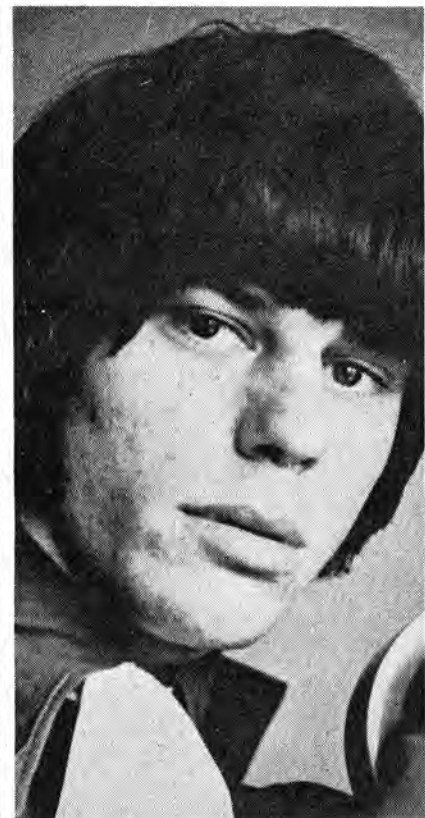


BRITISH BEAT FORUM



Keith Moon of the Who



Jeff Beck

Eric Clapton, dynamic one-third of the Cream, is generally considered to have the most authentic-sounding blues guitar in Britain. Although his ideas stem originally from such blues giants as B.B. King and Muddy Waters, the sound of Clapton is instantly recognizable. Of his instrument, an aging Gibson Les Paul, Clapton says, "It's fairly old and so a bit like old wine - the older it is, the better it is. Also, it's very hard to play a brand new guitar - it needs breaking-in."

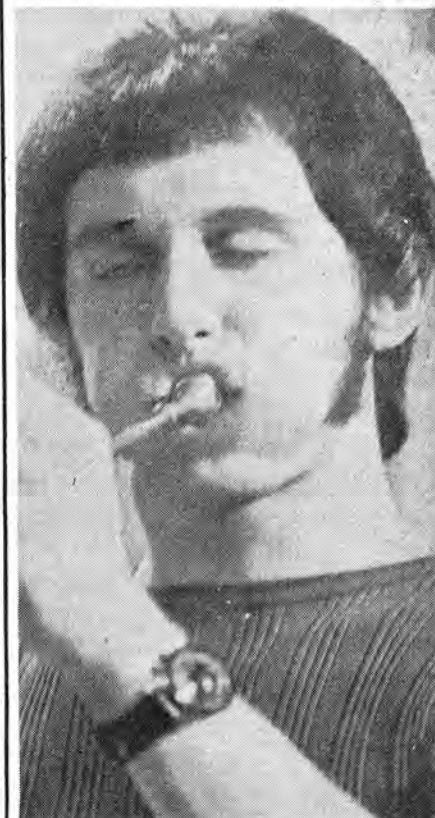
Clapton uses a 100-watt Marshall amplifier which he describes as giving excellent reproduction, but stresses that the only way to achieve the authentic bluesy sound is to sit down and listen to as many blues records as you can lay your hands on. "I want to play the music of my group, the Cream, but my guitar playing comes directly from the blues scene, and so it's still very wise for me to keep in touch with the blues. So, I listen to lots of records."

An equally talented guitarist, albeit less of a purist, is **Jeff Beck**, who was, incidentally, Clapton's replacement with the Yardbirds. Jeff also uses a Gibson Les Paul, with a preference for having two Marshalls to amplify his surging lines. "I've tried loads of other guitars," he said, "But as your fingers get bigger you have a wider reach and so I find this one is great. Guitar is a personal thing: it's like having a car. You start out with the first thing that comes along and you develop tastes throughout your life."

Jeff is trifle reluctant to hand out advice to aspiring guitarists because, as he put it, "I learned all the wrong things." He considered: "Well, at least people say that they're the wrong things but I think that if you enjoy doing something, you'll go ahead and do it anyway, and not worry about whether it's correct. It's like a kid with a toy model and a set of instructions. I bet he'll throw 'em away but he'll manage to build the model just the same. It's just the natural thing to do. It's your own pleasure and your own time that you're using but this method usually involves you in copying someone else. This is not necessarily bad because if you have anything of your own to say, you'll end up saying it on your own."



Pete Townshend of the Who



John Entwistle of the Who